

**MAKES WORK  
LIKE PLAY.  
AND PLAY  
LIKE... PLAY.**



**Mahindra  
GENIO**



 **Mahindra**  
Rise.



## PLAY IN STYLE PLAY IN COMFORT

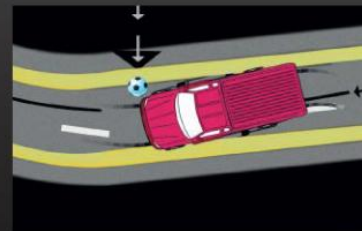
- › **Signature Mahindra grille** - The imposing new Mahindra grille is awe inspiring, aesthetic and impactful.
- › **Clear glass headlamps** - The eye-catching headlamps are aesthetically designed for improved visibility.
- › **Alloy wheels** Improves visual appeal.
- › **Car-like styling** - Plush interiors designed for a premium feel, for both driver and passenger alike.
- › **Spacious cabin** - One of the most spacious cabins in its segment
- › **Most comfortable seats** Meticulously designed through 'Body Pressure Mapping' and ergonomically adapted for the human form.





## PLAY IN SAFETY

- › **ABS** - Anti-lock braking system (ABS) ensures that the wheels don't lock up on you for maximum grip on slippery surfaces.
- › **Driver & co-passenger front airbags** - In the event of a collision, these airbags inflate instantly, protecting you from serious injury.
- › **Immobiliser** - An encrypted key recognition system that rejects duplicated keys and cuts off fuel supply to the engine, preventing theft.
- › **Crumple zones** - Located at key points, they absorb most of the impact in case of a collision. The unyielding steel bars in the doors minimize impact from the sides.





## UTILITY TO PLAY WITH

- › **Stylized cargo box** - The classy cargo box comes with a category-leading 1.25 tonne payload capacity.
- › **4WD technology with Borg Warner Transfer Case** - It significantly improves performance in extreme conditions and ensures better control at all times.





## TECHNOLOGY TO HELP YOU PLAY BETTER

- › **mHAWK engine** - Powered by the 2.2L, 4-cylinder mHAWK diesel engine that pumps out 120 bhp of power, driving the Genio to a top speed of upto 150 kmph.
- › **DDAS** - Stay updated on everything from the current speed, temperature and humidity to the current mileage and more.
- › **Cruise & audio controls on steering wheel** - At the push of a button, the Genio will maintain or change the vehicle speed without you having to press the accelerator, giving you a more comfortable drive.
- › **2-Din Audio** - It supports all formats- MP3 CDs, SD cards and even USB drives.

## ENGINE

Type	mHAWK, CRDe, DOHC, 16v, VGT
Cubic Capacity	2179 CC
Max Gross Power	120 bhp (88kW) @ 4000 RPM
Max Gross Torque	290 Nm @ 1800 - 2800 RPM
Gearbox	5 Speed manual
Tyres	215/70 R15
Fuel tank	74 litres

## SUSPENSION

Front	Independent, Coil springs, Double Wishbone type with Anti-roll bar
Rear	Leaf spring

## BRAKES

Front	Disc and caliper type
Rear	Drum type
Turning circle radius	6.3 m

## DIMENSIONS (mm)

Wheel base	3200
Overall width	1850
Overall length (SC / DC)	5150/ 5215
Overall height	1880

## WEIGHT AND PAYLOAD (kg)

	SC	DC
Kerb weight (2WD / 4WD)	(1720 / 1820)	(1880 / 1980)
Payload (2WD / 4WD)	(1260 / 1160)	(1100 / 1000)
GVW	2980	

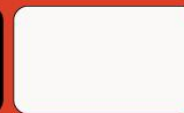
## CARGO DIMENSIONS (mm)

	SC	DC
Length	2400	1620
Width	1660	1660
Height	490	490

### Colours



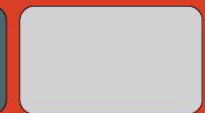
Napoli Black



Arctic White



Mara Overcast Grey



D-Sat Silver



Mahindra & Mahindra Limited  
International Operations  
Auto & Farm Equipment Sectors, 2<sup>nd</sup> Floor, Mahindra Towers,  
Worli, Mumbai- 400 019, Tel +91-22-24905773

Dealer's stamp



Note: In view of our policy of continuously improving our products, we reserve the rights to alter specifications or designs without prior notice and without liability. Illustrations do not show the vehicle in its standard form. Accessories shown are not part of standard equipment. Features listed are indicative only. They are available only in select variants.